



El Paso County Elections

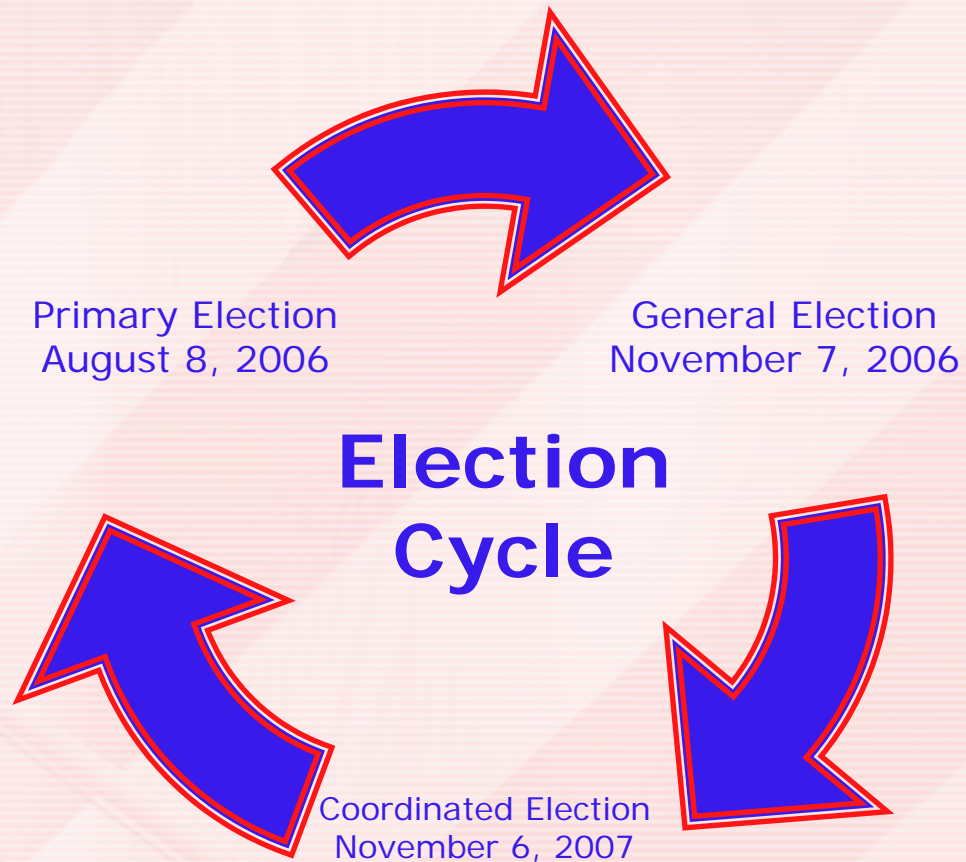
Presentation for Doherty High School

February 6, 2006

Keri Ashley and Alissa Bohall

Types of Elections

- Primary Election
 - 2nd Tuesday in August in Even Numbered Years
- General Election
 - 1st Tuesday following the 1st Monday in Even Numbered Years
- Coordinated Elections
 - 1st Tuesday in November in Odd Numbered Years



Elections Generally

- Precinct Caucus
 - Tuesday, March 21, 2006
- Assemblies
 - Between March 31-April 20, 2006
- Primary Elections
 - Tuesday, August 8, 2006
- General Elections
 - Tuesday, November 7, 2006

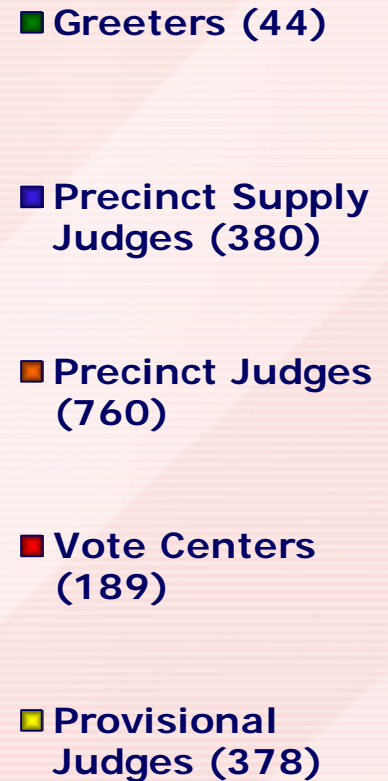
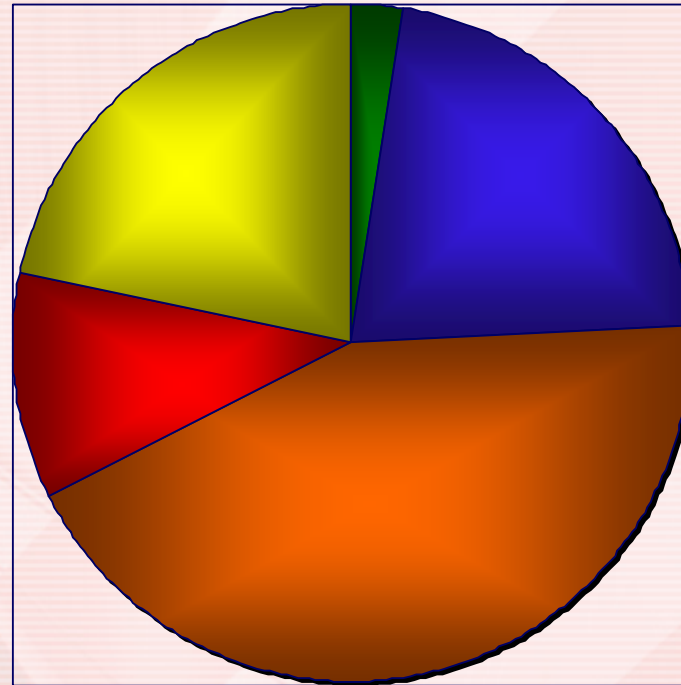


What Do We Do??

- Coordinate all County Elections
- Hire and Train Election Judges
- Maintain Voter Registration Data Base
- Work with individual County Candidates
- Provide Election Resources to the Public
- Work with the Colorado Secretary of State

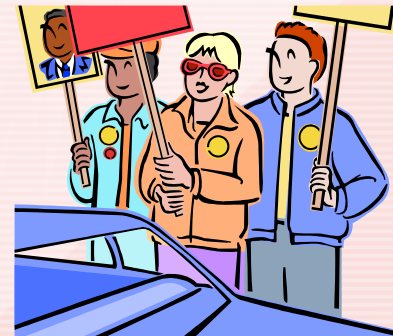
Help Us Out

- We need almost 1800 Election Judges for each election
- We need at least 380 student election judges



Greeters

- Provides directions within the polling place
- Assists with outside traffic control and monitors lines
- Makes sure all voters have proper ID ready and helps voters complete voter processing forms
- Watches for Electioneering

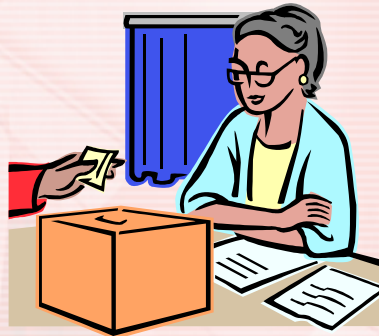


Election Judges

- Precinct Election Judges
 - Three types
 - Including 1 Precinct Supply Judge that fulfills one of these duties



**Poll Book Judge
(Receiving Judge)**



Ballot Judge



**Demonstration
Judge**

Vote Center Judge



- Picks up supplies day before election
- Operates AccuVote
- Assist voters with depositing ballots
- Drops off the supplies after the election with the Precinct Supply Judge
- Paid extra for dropping off supplies



Provisional Ballot Judge



- Processes voters who don't have an ID or are not in the poll book
- Provides instructions to the voter about the provisional ballot process
- Using a precinct locator gives directions to voters who are at the wrong polling place
- Picks up and drops off supplies
- Paid extra for dropping off supplies



What is Provisional Voting?

- **Second Chance Voting...No one is turned away**
- **Required under HAVA**
- **Why do people vote provisional?**
 - Didn't bring an ID
 - Name is not in the poll book
 - Not Registered in El Paso County
 - Not at the right polling place
- **What happens to provisional ballots?**
 - Reviewed after the election
 - If they are counted they are included in the official results
 - Voter can call our office after the election to find out if their ballot was counted or not



Absentee Ballot Judges (Primary Only)

- Central Count Judges
- \$10 per hour
 - Preprocessing
 - Starts the week before the election
 - Open and separate ballots from the envelopes
 - Counting
 - Starts the week before the election
 - Run ballots through the AccuVote
 - Duplication
 - Starts the week before the election
 - Duplicates any ballots that are unable to be processed by the AccuVote



Early Voting Election Judge (Primary Only)



- Works at one of our six locations
- \$10 per hour
- Works the week before the election
- Demonstrates to voters how to use DREs (touch screens)
- Escorts voter to the DRE and ensures Access Card is coded correctly
- Troubleshoots any problem with the DRE
- Balance signature cards with votes cast on DREs daily

Curb Side Kids



- We need 9 students per shift on Election Day (18 students total)
 - Two 6 hour shifts
 - 7:00am-1:00pm
 - 1:00pm-7:00pm
- Assist voters in curbside drop off of their Absentee Ballots
- You can receive \$55, or academic credit, or community service

Evening Runners



- We need 12-20 students
- Needs to be able to lift approximately 35 lbs.
- Assist Judges in unloading their election supplies from their cars
- Work approximately 2 to 3 hours from 7pm-9pm
- Earn \$20

Be A Student Election Judge!



Requirements:

- At least 16 years old
- A junior or senior in good standing at your high school
- Attended a training class prior to working as an election judge
- Incentives:
 - \$75 for the day plus \$10 for attending training
 - Academic credit
 - Community service

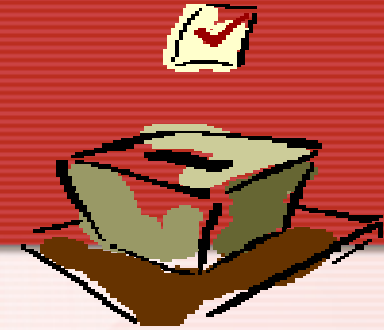
El Paso County Reward Program



- **Our office is developing an incentive program to recognize and thank students and faculty members that contribute to the Student Election Judge Program**

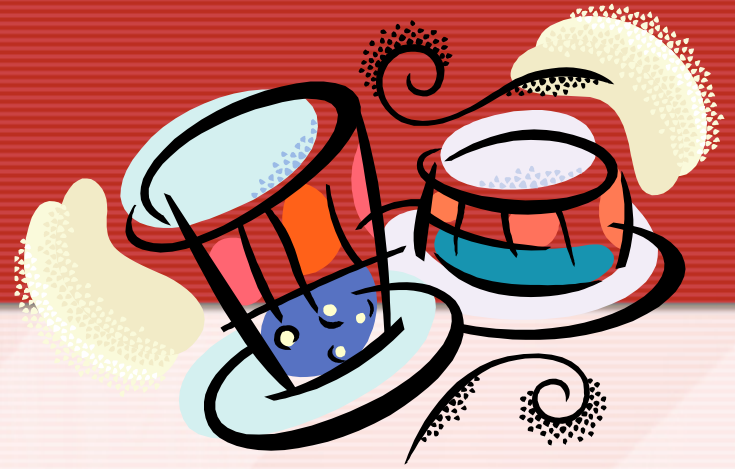
More Details
to Follow

Voting In El Paso County



- Three ways to cast your ballot
 - Absentee Voting
 - Ballot mailed to you as early as 30 days before the election
 - Due back to the County Clerk's office by 7 pm on election day
 - Early Voting
 - Begins usually a week to two weeks before the election
 - 3 convenient locations open during regular business hours Monday thru Friday
 - Polling Place
 - Open Election day from 7 am to 7 pm

Future of Elections



- Vote Centers
 - Ability to vote at any location
 - Increases voter turn out
 - Reduce the time it takes to vote
 - Reduces the number of Provisional Ballots
 - Reduces the number of human errors

Future of Elections



- Statewide Voter Registration
 - Required under HAVA
 - Creates uniformity throughout the state
 - Creates better communication between all of the counties
 - Seamless registration process
 - Reduces duplicate registrations
 - Reduces opportunities for voter fraud
 - Provides a way to verify voters information

Future of Elections



- One DRE in Every Polling Place
 - Required under HAVA
 - Allows disabled voters to vote without assistance
 - Back up in case problems occur at the polling place



The background of the slide is a stylized American flag. The top-left portion features a blue field with white stars, while the rest of the image is filled with red and white wavy stripes. The text is centered over this background.

Questions??

And

Voting